

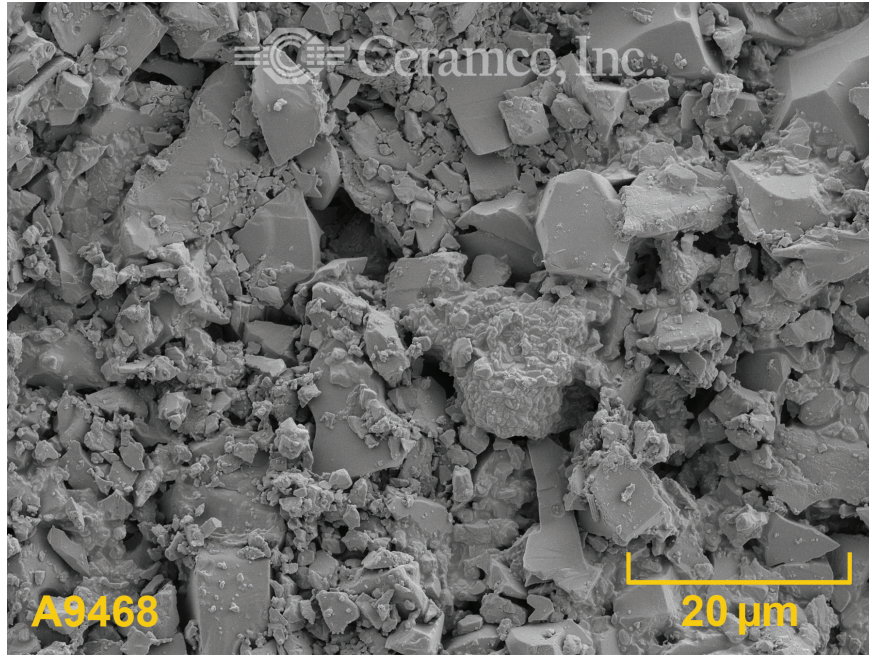


Ceramco, Inc.

Manufacturing OEM Ceramic Parts of Complex Geometries

Material Certification Reference

Date: October 19, 2015
Material: A9468 (Alumina formulation)
Process: LPIM - Low Pressure Injection Molding
Microstructure:



Electron Microscope, Scanning- Tescan Lyra3 GMU FIB SEM, University of New Hampshire

Composition:	Oxide	wt %
	Na ₂ O	0.385
	SiO ₂	5.9792
	Fe ₂ O ₃	0.0194
	CaO	0.012
	MgO	0.006
	Trace	0.0564
	Al ₂ O ₃	93.542
	Total	100.00

The number of digits after the decimal point do not indicate the degree of accuracy.

The accuracy of these data are +/-0.05 %

Chemical composition data are from actual lot(s) of raw material as received from their source(s). Lots presently in production last updated as of the date above. Information on all lots are retained for traceability. You must request a Material Certification at the time of order to accompany shipment(s).

For more information about this material, or any other material, its certification, or process, please contact us.

1467 E Main St • Center Conway NH 03813-4169 USA

T: +1 (603) 447-2090 • F: +1 (603) 447-3906 • oem.parts@ceramcoceramics.com

www.ceramcoceramics.com