

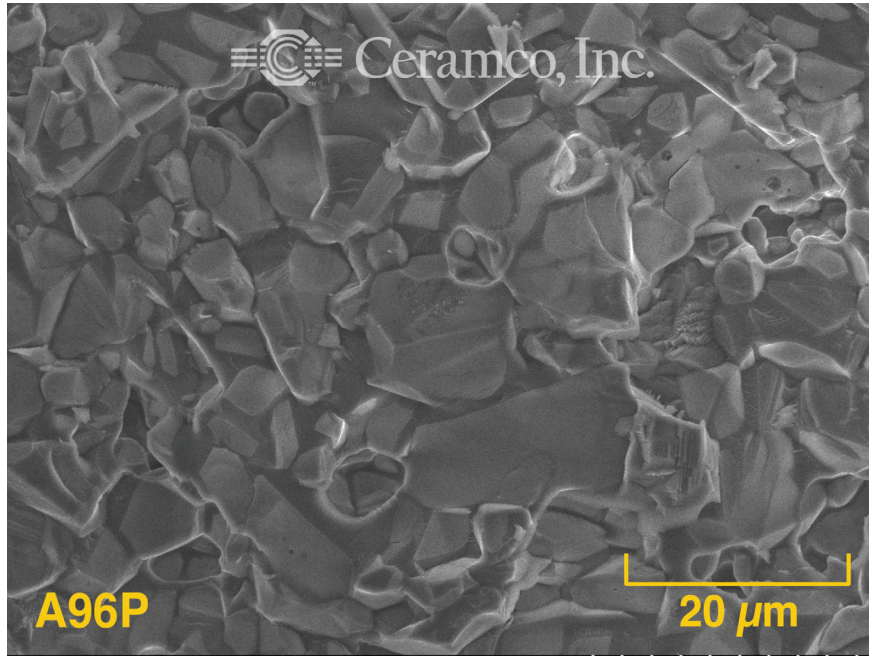


# Ceramco, Inc.

Manufacturing OEM Ceramic Parts of Complex Geometries

## Material Certification Reference

**Date:** September 24, 2024  
**Material:** A96P (Alumina formulation)  
**Process:** LPIM - Low Pressure Injection Molding  
**Microstructure:**



SU3500 10.0kV 12.0mm x 2.00k SE

<b>Composition:</b>	<b>Oxide</b>	<b>wt %</b>
	Na <sub>2</sub> O .....	0.0326
	SiO <sub>2</sub> .....	2.3167
	Fe <sub>2</sub> O <sub>3</sub> .....	0.0162
	CaO .....	0.1955
	MgO .....	1.1927
	Al <sub>2</sub> O <sub>3</sub> .....	95.6336
	B <sub>2</sub> O <sub>3</sub> .....	0.0019
	K <sub>2</sub> O .....	0.003949
	<b>Total .....</b>	<b>99.3931</b>
	Trace .....	0.6069

The number of digits after the decimal point do not indicate the degree of accuracy.

The accuracy of these data are +/-0.05 %

Chemical composition data are from actual lot(s) of raw material as received from their source(s). Lots presently in production last updated as of the date above. Information on all lots are retained for traceability. You must request a Material Certification at the time of order to accompany shipment(s).

For more information about this material, or any other material, its certification, or process, please contact us.

[1467 E Main St • Center Conway NH 03813-4169 USA](#)

T: [+1 \(603\) 447-2090](tel:+16034472090) • F: [+1 \(603\) 447-3906](tel:+16034473906) • [oem.parts@ceramcoceramics.com](mailto:oem.parts@ceramcoceramics.com)

[www.ceramcoceramics.com](http://www.ceramcoceramics.com)