

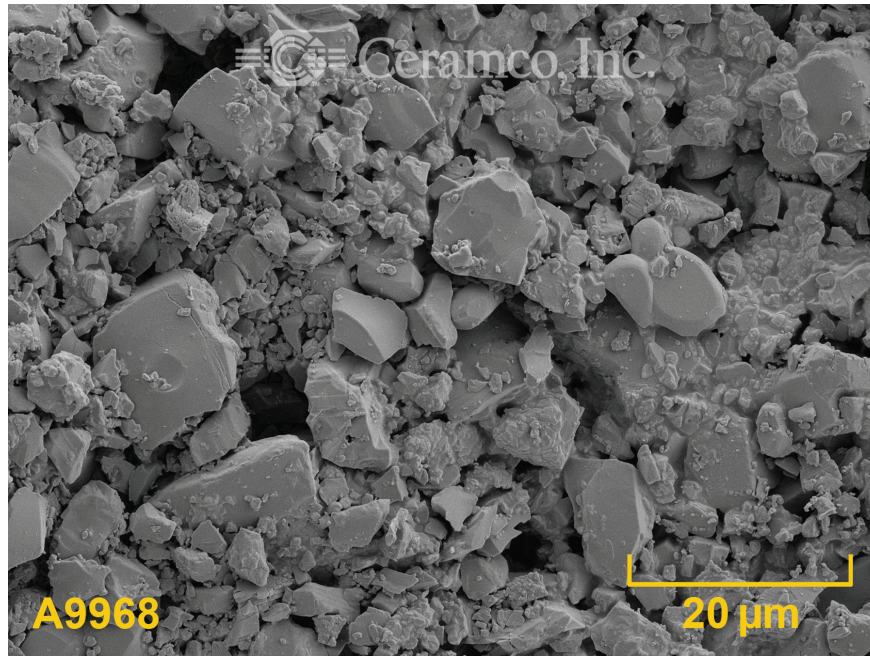


# Ceramco, Inc.

Manufacturing OEM Ceramic Parts of Complex Geometries

## Material Certification Reference

**Date:** October 19, 2015  
**Material:** A9968 (Alumina formulation)  
**Process:** LPIM - Low Pressure Injection Molding  
**Microstructure:**



Electron Microscope, Scanning- Tescan Lyra3 GMU FIB SEM, University of New Hampshire

<b>Composition:</b>	<b>Oxide</b> .....	<b>wt %</b>
	Na <sub>2</sub> O .....	0.3406
	SiO <sub>2</sub> .....	1.0559
	Fe <sub>2</sub> O <sub>3</sub> .....	0.0184
	CaO .....	0.0077
	MgO .....	0.0011
	K <sub>2</sub> O .....	0.002
	Ga <sub>2</sub> O <sub>3</sub> .....	0.0011
	Trace .....	0.0074
	Al <sub>2</sub> O <sub>3</sub> .....	98.5658
	<b>Total</b> .....	<b>100.00</b>

The number of digits after the decimal point do not indicate the degree of accuracy.

The accuracy of these data are +/-0.05 %

Chemical composition data are from actual lot(s) of raw material as received from their source(s). Lots presently in production last updated as of the date above. Information on all lots are retained for traceability. You must request a Material Certification at the time of order to accompany shipment(s).

For more information about this material, or any other material, its certification, or process, please contact us.

[1467 E Main St • Center Conway NH 03813-4169 USA](http://1467 E Main St • Center Conway NH 03813-4169 USA)

T: +1 (603) 447-2090 • F: +1 (603) 447-3906 • [oem.parts@ceramcoceramics.com](mailto:oem.parts@ceramcoceramics.com)

[www.ceramcoceramics.com](http://www.ceramcoceramics.com)