

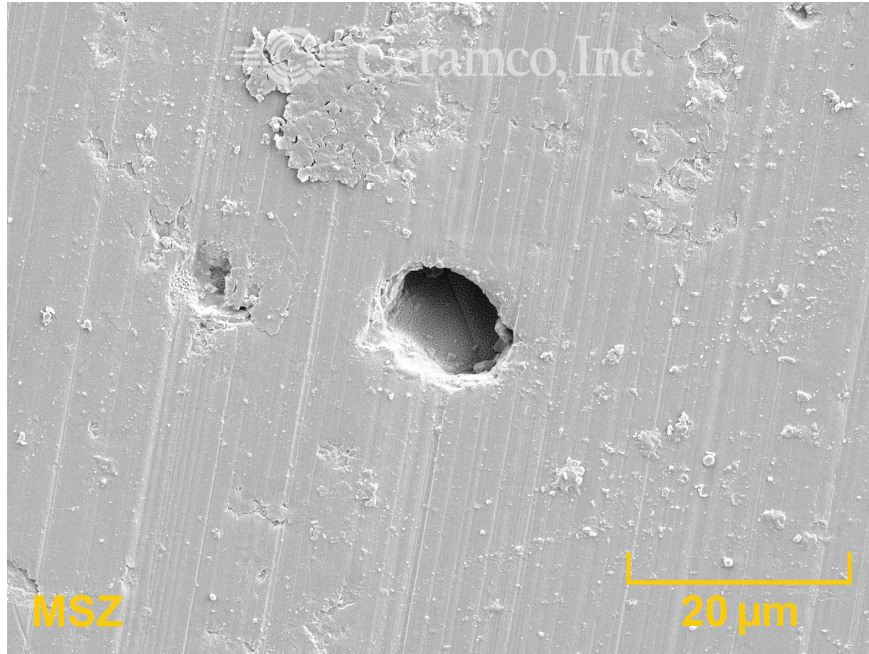


Ceramco, Inc.

Manufacturing OEM Ceramic Parts of Complex Geometries

Material Certification Reference

Date: November 2, 2018
Material: MSZ (Zirconia formulation)
Process: LPIM - Low Pressure Injection Molding
Microstructure:



Electron Microscope, Scanning- Tescan Lyra3 GMU FIB SEM, University of New Hampshire

Composition:	Oxide	wt %
	Na ₂ O	0.00965
	SiO ₂	0.134135
	Fe ₂ O ₃	0.001098
	CaO	0.0107
	MgO	3.4405
	Al ₂ O ₃	0.24125
	TiO ₂	0.08685
	Y ₂ O ₃	5.1917
	Trace	0.058317
	ZrO ₂ +HfO ₂	90.8258
	Total	100.00

The number of digits after the decimal point do not indicate the degree of accuracy.

The accuracy of these data are +/-0.05 %

Chemical composition data are from actual lot(s) of raw material as received from their source(s). Lots presently in production last updated as of the date above. Information on all lots are retained for traceability. You must request a Material Certification at the time of order to accompany shipment(s).

For more information about this material, or any other material, its certification, or process, please contact us.

1467 E Main St • Center Conway NH 03813-4169 USA

T: +1 (603) 447-2090 • F: +1 (603) 447-3906 • oem.parts@ceramcoceramics.com

www.ceramcoceramics.com